

## Couplers

### REFLECTOMETER COUPLERS

- 3020A and 3022 Standards for Precision Reflectometry Measurements
- Each Model Calibrated Over Broad Band
- High Directivity
- Extremely Low VSWR
- Ideal for Test and Laboratory Applications\*



\*See page 14 for recommended transmitter system type models

### SPECIFICATIONS

FREQ RANGE (MHz)	MODEL NO.	COUPLING (dB)	DIRECTIVITY dB (Min)	VSWR		EQUIVALENT RESIDUAL VSWR (Max)	ABSOLUTE CALIBRATION ACCURACY (Per 10 dB) dB	TRACKING dB	POWER AVERAGE (Watts)			CONN	WT Kg
				PRIMARY LINE (Max)	SECONDARY LINE (Max)				INCIDENT (dB)	REFLECTED (dB)	PEAK		
500-1000	3020A	20 ±1.0	35	1.05	1.10	1.04	±0.1	0.3	500	500	10	N	1.1
1000-4000	3022	20 ±1.0	30	1.15	1.15	1.09	±0.1	0.3	500	500	10	N	0.7

### Directional Couplers with Type "N" Connectors

FREQ RANGE (MHz)	MODEL NO.	COUPLING (dB)	DIRECTIVITY dB (Min)	TRUE INSERTION LOSS dB (Max)	VSWR		CALIBRATION FREQUENCIES (MHz)	ABSOLUTE CALIBRATION ACCURACY (Per 10 dB) dB	POWER AVERAGE (Watts)				WT Kg	
					PRIMARY LINE (Max)	SECONDARY LINE (Max)			INCIDENT (dB)		REFLECTED (dB)			PEAK
									10	20,30	10	20,30		
460-950	3001	10 ±1.0	30	0.70	1.15	1.15	460, 580, 700, 825, 950	±0.1	200	500	50	500	10	0.52
		20 ±1.0	30	0.22	1.15									
		30 ±1.0	32	0.20	1.15									
950-2000	3002	10 ±1.0	30	0.70	1.15	1.15	950, 1210, 1470, 1730, 2000	±0.1	200	500	50	500	10	0.52
		20 ±1.0	30	0.22	1.15									
		30 ±1.0	30	0.20	1.15									

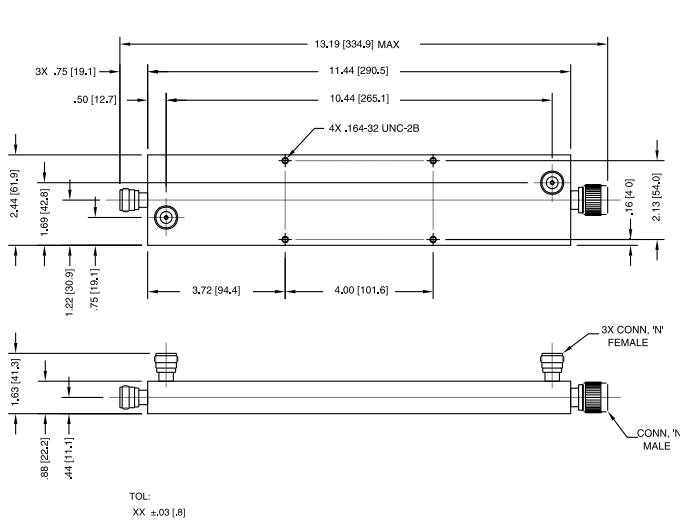
### Directional Couplers with Type "N" Connectors

FREQ RANGE (MHz)	MODEL NO.	COUPLING (dB)	DIRECTIVITY dB (Min)	TRUE INSERTION LOSS dB (Max)	VSWR		FREQ.* SENSITIVITY dB (Max)	CALIBRATION FREQUENCIES (MHz)	ABSOLUTE CALIBRATION ACCURACY (Per 10 dB) dB	POWER AVERAGE (Watts)				WT Kg	
					PRIMARY LINE (Max)	SECONDARY LINE (Max)				INCIDENT (dB)		REFLECTED (dB)			PEAK
										10	20,30	10	20,30		
500-1000	3041	10 ±0.5	20	0.70	1.10	1.20	±0.25	500, 625, 750, 875	±0.1	200	500	50	500	10	0.9
		20 ±0.5	20	0.22	1.10										
		30 ±0.5	20	0.20	1.10										
920-2200	3042B	10 ±0.5	20	0.70	1.10	1.20	±0.25	920, 1240, 1500, 1880, 2200	±0.1	200	500	50	500	10	0.6
		20 ±0.5	20	0.22	1.10										
		30 ±0.5	20	0.20	1.10										

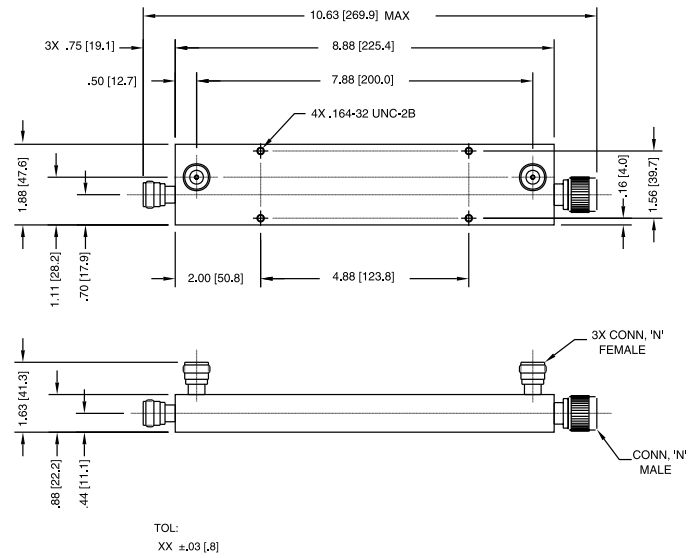
\*Frequency sensitivity is included in coupling variation

# Couplers

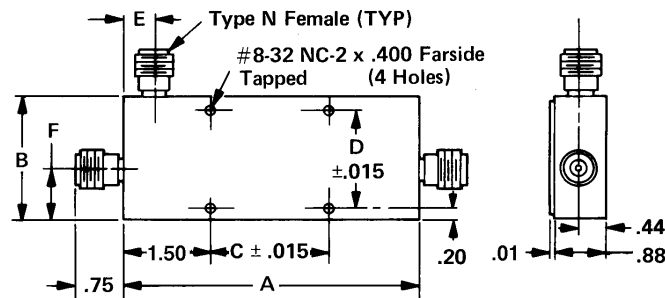
## OUTLINE DRAWINGS



3020A



3022



MODEL	A	B	C	D	E	F
3001-10, -20	6.25	2.13	3.000	1.688	.51	.87
3001-30	6.25	2.13	3.000	1.688	.51	.69
3002-10, -10	4.10	2.13	1.090	1.688	.51	.87
3002-30	4.10	2.13	1.090	1.688	.52	.69
3041-10, -20	10.08	2.12	3.000	1.688	.50	.86
3041-30	10.08	2.12	3.000	1.688	.50	.68
3042B-10, -20	6.12	2.12	3.000	1.688	.50	.86